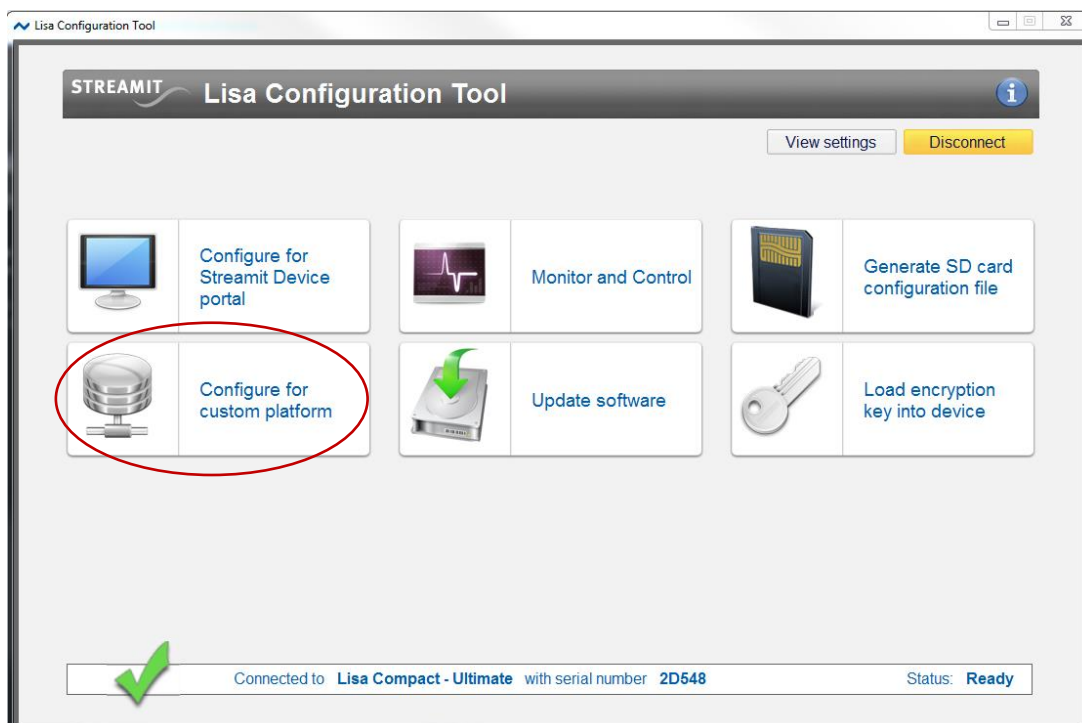


Custom Channels Compact Music Player How To Set Static IP (CC Ensemble Config Platform)

The easiest way to configure the static IP on the Custom Channels Lisa Compact player is via the Lisa Configuration Tool (LCT) and a USB Connection. Before you start you will need the following:

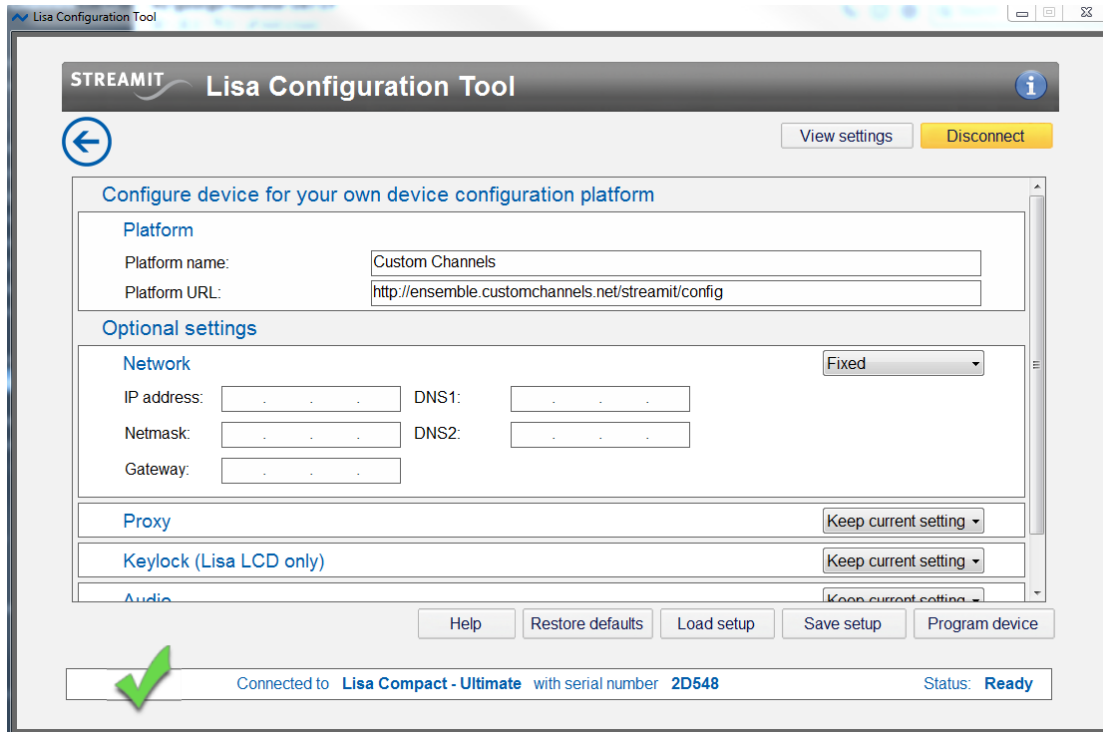
- A Windows PC running Win7 or higher
- A USB-A to USB-Micro B cable (not provided)
- The Lisa LCT Program. Download at <http://www.streamit.eu/cmdownloads/lisa-configuration-tool-v1-2-0/>
- Desired static IP of the player
- Your network's subnet mask
- Your network's gateway IP address
- A DNS address. We recommend using public DNS 8.8.8.8 and 8.8.4.4

Once the LCT program is installed on your computer, connect the Compact Player (with power on) via USB and relaunch the LCT software. LCT should indicate it is connected to the device with Serial number ##### on bottom bar, but if it doesn't connect automatically, you can press the "Connect" button in the top-right corner. You should see a page like this:



Click the "Configure for custom platform" button, and you will arrive at the page below. First, you'll need to re-enter the proper Platform Name and URL in the "Platform" section, as this is updated any time you program the player from this screen.

- Name: Custom Channels
- URL: <http://ensemble.customchannels.net/streamit/config>



Then, under "Optional Settings", in the "Network" section, choose the "Fixed" option. This will open up the Network settings window as seen above. In the expanded Network menu, enter your desired Fixed Network IP information. Once you are done, click "Program Device" at the bottom-right corner to send this configuration to the player.

The player will reboot automatically after receiving the new configuration. You can confirm your settings by clicking "View Settings" in the top-right corner and then clicking the "Read Settings" button that will appear in the top-right corner. You can now disconnect from LCT and unplug the player from USB. The player should now be able to connect using the fixed IP settings you entered.

Questions?
Email support@customchannels.net or call 303.444.7700 x7